



## Dual altimeter with an ATtiny 84 microcontroller Kit assembly instructions

Version	date	Author	Comments
1.0	03/04/2013	Boris du Reau	Initial version
1.1	13/05/2013	Boris du Reau	Updated document

### Rocket Type

Micro-max	Model Rocket	Mid power	High power
No	yes	yes	yes

### Category

Construction technic	Ground Support	Electronic	Other
		X	X

Goal .....	2
Kit content .....	2
Components layout.....	4
Tools required .....	5
Soldering the components .....	6
Kit assembly.....	7



## ATtiny 84 dual Altimeter “Mini Alti Duo”– kit assembly instructions

### Goal

The goal of this document is to explain how to build the dual altimeter kit designed around an ATtiny 84 microcontroller. The kit is using classic components on purpose so that anybody can do it without any major difficulties.

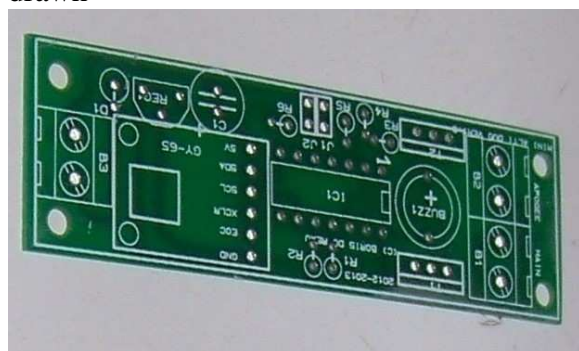
Before your start

*Remember that it is a kit and that you can modify the program and behaviour of your altimeter.*

*The country where you live might not even allow the use of such device. You have to assume total legal responsibility for any damages or claims including personal injury that results from the use of this device. I shall not be responsible for the above. If you disagree with that, please do not build it or use it.*

### Kit content

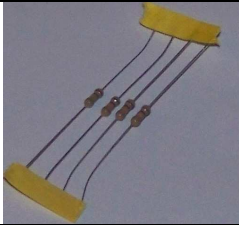

An epoxy board with all the components drawn



and the components in a plastic bag

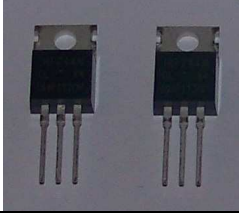


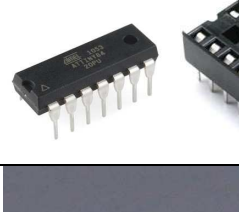
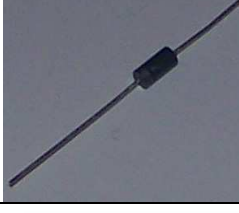
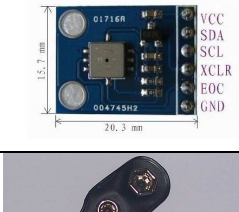
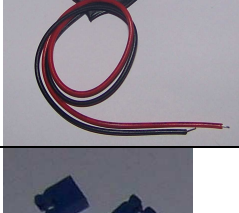
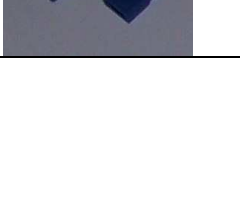



The components list is as follow

R1, R2, R3, R4	100Kohm (brown, black and yellow) to 150Kohm (brown, green and yellow)		
R5, R6	10Kohm (brown, black and orange) to 15kohm (brown, green and orange)		
C1	47µf (- is marked on the cap, + is the other lead)		

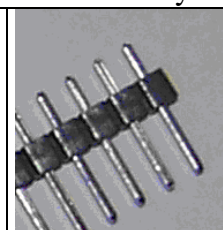


# ATtiny 84 dual Altimeter “Mini Alti Duo” – kit assembly instructions

T1, T2	Transistor (IRF540 or IRFZ44)	
Reg1	78L05 (T092 package)	
B1, B2, B3	2 screw terminal bloc pitch 5,08mm	
Buzz1	5 volts active buzzer	
IC1	Attiny 84 + 14 pins socket (programmed with an Arduino bootloader)	
D1	Can be 1N4001 to 1N4007	
Pressure sensor	BMP085 (on a GY-65 module)	
Clip pile	9 volt battery clip	
J1 et J2	Jumpers (used to configure the main altitude)	

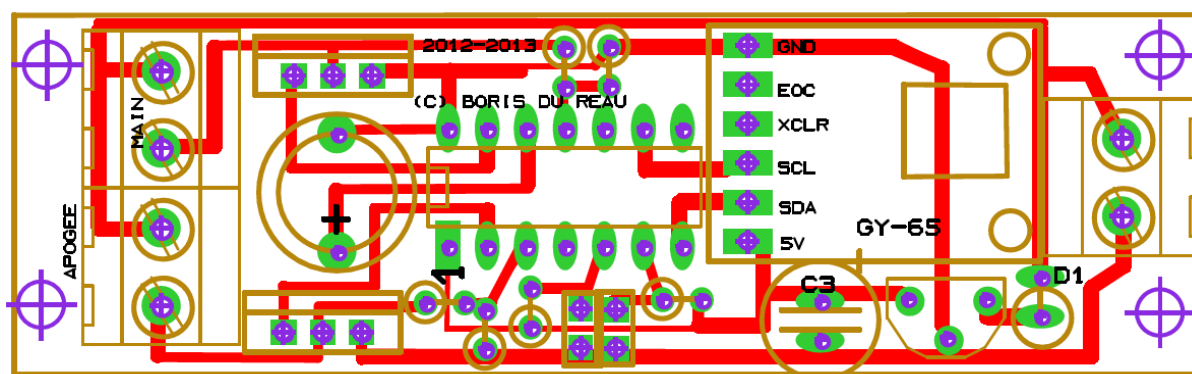


## ATtiny 84 dual Altimeter “Mini Alti Duo”– kit assembly instructions

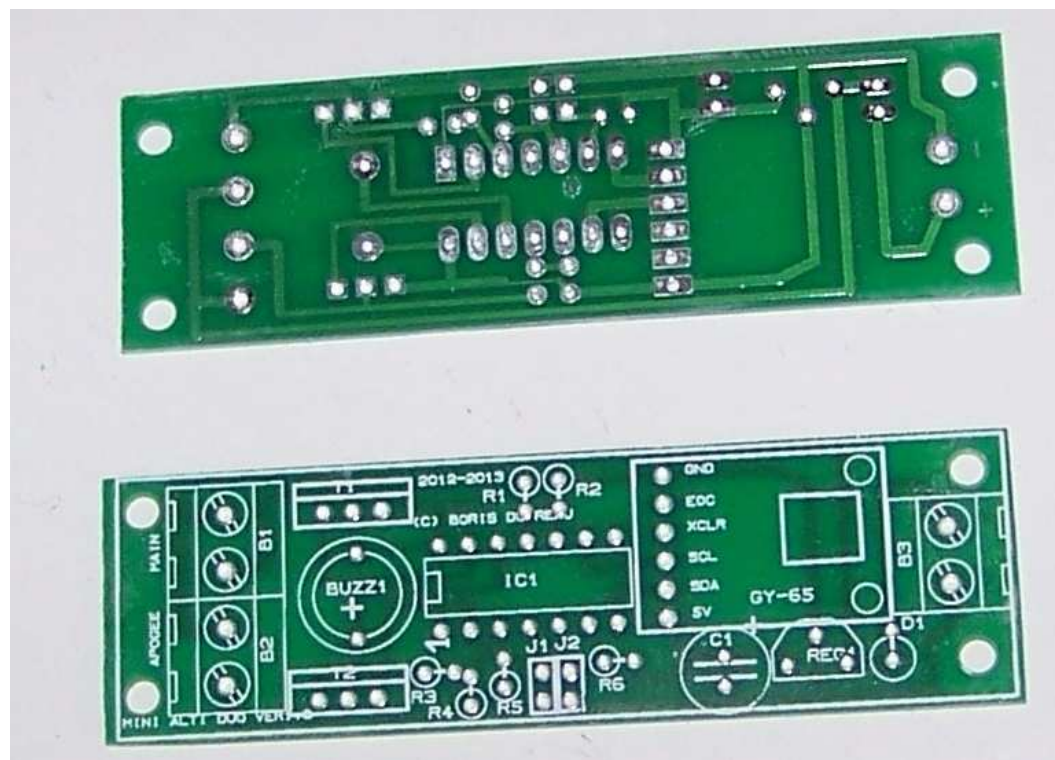
			
connector	2 x 2 pins strip		

Unlike the bigger alti Duo you cannot program it using a USB connector. You need to remove the chip and use an AVR programmer.

### Components layout :



An epoxy board is provided with the kit, all components are drawn so that they can be quickly identified. This is a single sided board. This means that you only need to solder the components on one side.










## ATtiny 84 dual Altimeter “Mini Alti Duo”– kit assembly instructions

### Tools required

Holes in the board have already been drilled to the correct diameter depending on the component used, you just need to plug them and solder them.

The tools below are the minimum needed to build the kit.

Solder	
Wire cutter	
Needle-nosed pliers	
A soldering iron (a good one 25/30W, brand JBC for example)	
A magnifier on a double hand holder	



## ATtiny 84 dual Altimeter “Mini Alti Duo”– kit assembly instructions

A sponge with a soldering iron stand



### Soldering the components

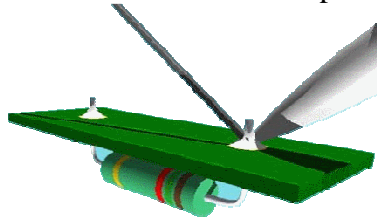
Before you get started here are some recommendations. Check the kit content and insure that you have indentified correctly all the components. Be careful to put the parts in the proper place, as it can be difficult to remove them. Make sure that you do not get mistaken between the transistors and the voltage regulator. Read the reference on the component with the help of the magnifier glass.

Do not revert active component such as the transistor and whenever there is a « + » sign on a component (ie; it has to be plugged one way and not the other) then it is mentioned

Always start by the thinner components so that after you plugged them you do not have to hold them while soldering.

### Some advices to do good soldering

- Do not hesitate to clean up frequently your soldering iron in order to do good soldering.
- Always start by the thinner components and then plug them to the board.
- Heat the board and component lead together first and then bring the solder when hot enough.



- Do not overheat the components as it could permanently damage them. Be careful to solder properly if you want them to last, something working today might not later. Just one missing connection can cause failure.

- Always work in a comfortable position on a tidy table with some space.

If you need help to solder your components just check on the internet there is lots of good tutorial out there that will teach you how to do some soldering.



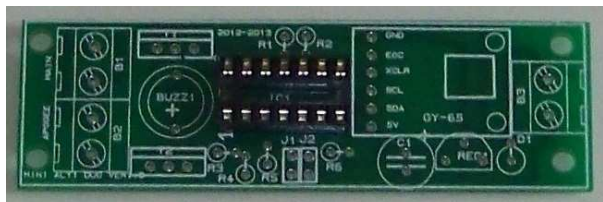


## ATtiny 84 dual Altimeter “Mini Alti Duo” – kit assembly instructions

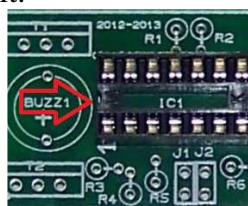
### Kit assembly

I am assuming that you have done electronics kits before, so if you have problems reading the following instructions ask for help.

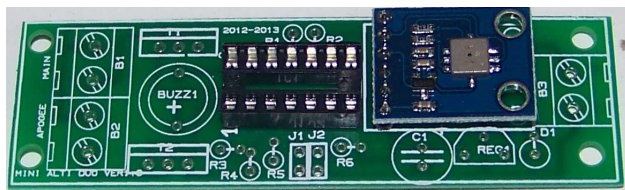
### The microcontroller socket



Plug the 14 pins socket and make sure that you do not miss any pin. You have a mark on the socket make sure it is on the left, this will help you later on when you plug the micro controller. Check the photo to position it.

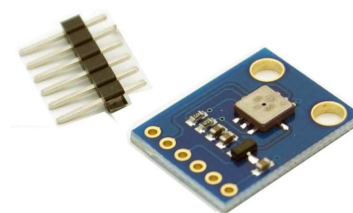


### The pressure sensor

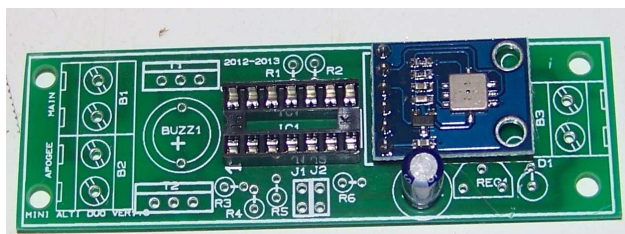


Plug and solder the sensor board. You need to solder that board directly on the altimeter board.

Note that you might have to assemble it first



### The capacitor

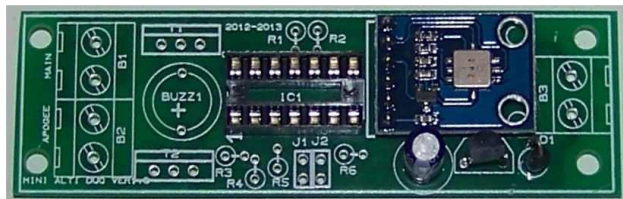


The 47µF capacitor has a « + » which should go up, the other leg being connected to the ground at the bottom.



## ATtiny 84 dual Altimeter “Mini Alti Duo”– kit assembly instructions

### The voltage regulator and protection diode



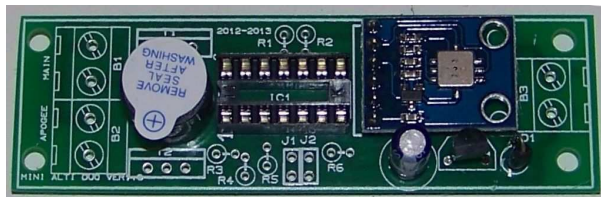
The protection diode has to be correctly plugged. The silver ring should be at the bottom, touching the board.

This is actually optional it is just to protect against polarity inversion, however it will reduce the maximum current and the voltage will slightly drop; if you do not want it replace it by a wire.

Without a diode if you reverse the voltage by mistake (ie: when you plug the battery) then the circuit will be permanently damage.



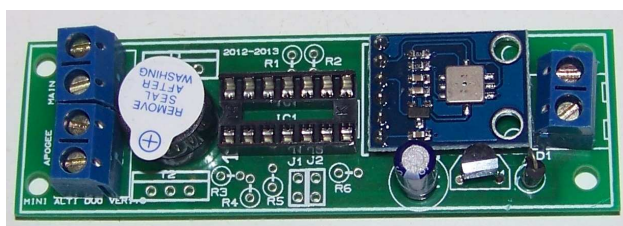
### The buzzer



Note the « + » sign on the buzzer do not reverse it (remove the tape and check that you also have a + sign on the plastic cap). The “+” sign should be also the longest leg.



### The terminal blocs



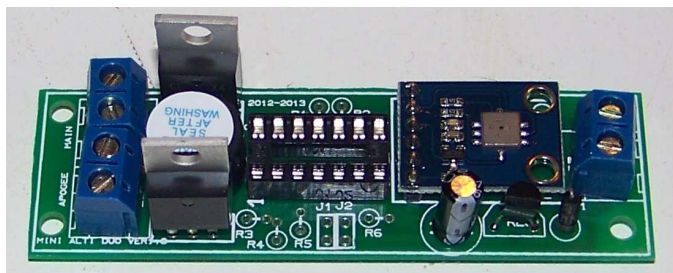
Make sure that the terminal blocs output are facing each end of the circuit board.





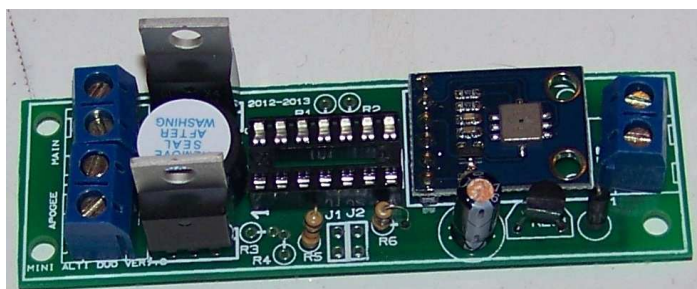
## ATtiny 84 dual Altimeter “Mini Alti Duo”– kit assembly instructions

### The transistors

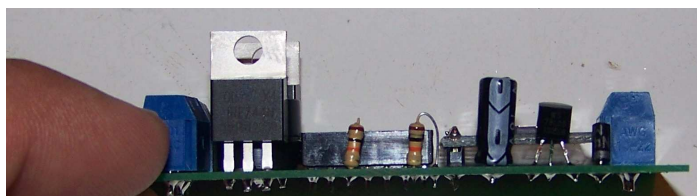


Place them like in the picture

### The resistors



Bend the leads about 45 degrees.  
Plug all the resistors where they should be, they should be 6 of them:  
2x 10K (brown, black and orange)  
and 4x 100K (brown, black and yellow)  
First solder the 10K



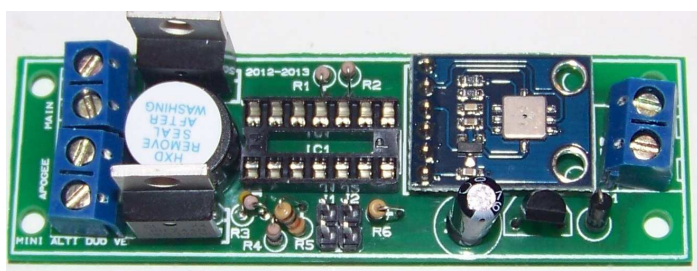
Resistors are soldered vertically



Then the 100k

Then cut all the components legs as short as possible

### The jumpers



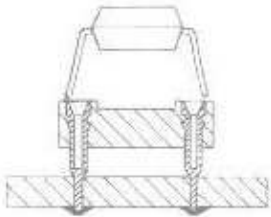
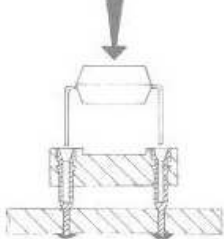
If it has not been done already; cut the connectors so that they are 2 pins.  
Then plug them to the board. Use cello tape to hold them while you are soldering.



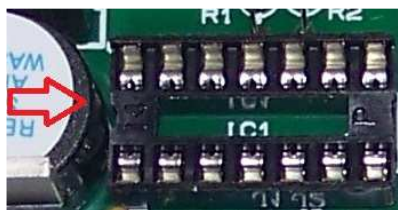
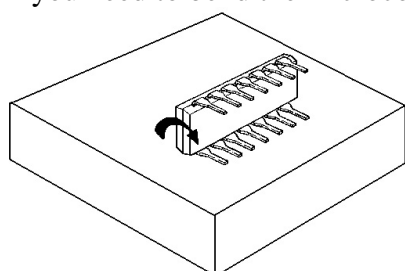
## ATtiny 84 dual Altimeter “Mini Alti Duo”– kit assembly instructions

### The microcontroller

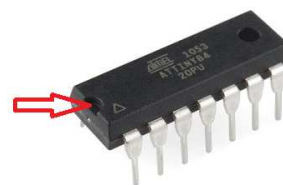
Plug the microcontroller in the correct direction. Before you plug it you have to bend the microcontroller legs if it has not been done already.

	<p>On a new circuit, legs are wider than the socket</p>		<p>You need to bend them slightly do that you can safely plug the circuit in the socket.</p>
---	---	--	--

If you need to bend the microcontroller legs do it like in the picture below:

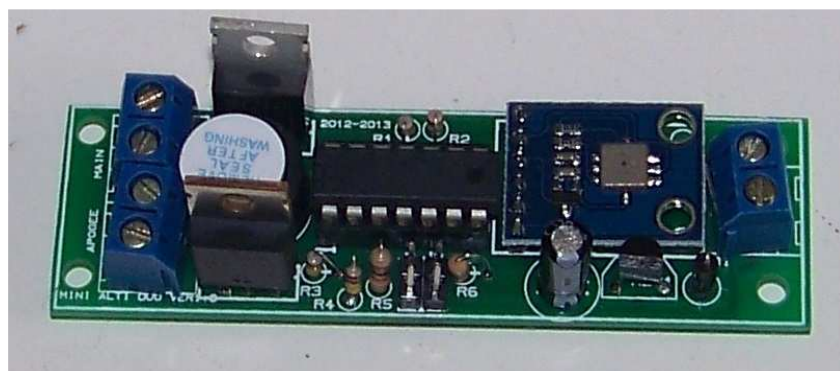


If the socket has been correctly soldered use the socket mark to place the microcontroller and align both marks.



### The finished kit is below

The finished kit looks like this. Double check yours and make sure all components have been correctly positioned. One mistake and the altimeter will not work and the components could be damaged.



Should you need additional help do not hesitate to ask.